

CORRESPONDENCE

Cladistics of the ichneutinae revisited

M. J. SHARKEY

Department of Entomology, University of Kentucky, S-225 Agricultural Science Center North, Lexington, Kentucky 40546-0091, USA

KEYWORDS: Phylogeny, classification, Braconidae, systematics, Hymenoptera

Dr Donald Quicke was kind enough to point out several inconsistencies in the text of the revision of the Ichneutinae genera by Bob Wharton and myself (Sharkey and Wharton, 1994). This led to my discovery of three errors and these are detailed below.

- (1) Character 27 on page 878 should read.
27 Unmargined median longitudinal groove on tergum 1
0: absent
1: present
- (2) Character 33 on page 878 should read.
33 Female hypopygium
0: patch of apical setae absent
1: patch of apical setae present
- (3) In the data matrix (page 897) *Meusonia* should have an entry of ? for character 16 (meaning polymorphic in this case) instead of '0' as reported in the published data matrix. The corrected data matrix is presented in Table 1.

Table 1. Corrected Ichneutinae data set

Taxa	Characters																																							
	1	2	3	4	5	6	7	8	9	0	1	2	3	4	5	6	7	8	9	0	1	2	3	4	5	6	7	8	9	0	1	2	3	4	5	6'				
Out	0	0	0	0	0	0	0	0	0	0	0	0	0	0	0	0	0	0	0	0	0	0	0	0	0	0	0	0	0	0	0	0	0	0	0	0	0	0		
Agathidinae	0	0	1	1	0	0	0	0	1	0	0	0	0	0	0	0	0	0	0	0	0	0	0	0	0	0	0	0	0	0	0	0	0	0	0	0	0	0		
Sigalphinae	0	0	0	0	0	0	0	0	0	0	0	0	0	0	0	0	0	0	0	0	0	0	0	0	0	0	0	0	0	0	0	0	0	0	0	0	0	1	0	
Hebichneutes	0	0	1	0	0	0	0	0	0	0	0	0	0	0	0	0	1	1	1	0	0	0	1	1	1	0	0	1	1	0	0	1	0	0	0	0	1	1	1	?
Muesonia	0	0	1	0	0	0	0	1	0	0	0	0	0	0	1	?	1	0	1	0	0	0	1	1	1	0	0	0	0	0	0	0	0	0	0	0	1	1	?	
Properops	2	2	1	?	0	0	0	0	0	0	0	0	0	0	0	1	0	1	1	1	1	1	1	1	1	1	1	?	0	0	0	0	0	0	1	1	1	1		
Helconichia	0	0	0	0	0	0	0	0	0	1	0	0	0	0	?	0	1	0	0	0	1	1	1	0	0	1	0	0	1	0	0	0	0	0	0	1	1	?		
Ichneutes	1	1	1	0	0	0	2	0	1	0	0	0	0	1	?	0	0	0	0	1	0	0	0	1	0	0	0	1	1	0	0	0	1	1	0	0	1	?	2	
Paroligoneurus	1	1	1	1	0	0	1	2	1	1	1	0	1	1	0	1	0	1	0	1	0	0	1	?	1	1	1	?	0	1	0	1	0	?	0	1	1	0		
Lispixys	1	1	1	1	0	0	0	2	1	1	1	0	1	1	0	1	0	1	0	1	0	0	1	0	1	1	1	1	1	1	0	1	0	0	0	1	1	?		
Oligoneurus	1	1	1	1	0	0	0	2	1	1	1	0	1	0	0	1	0	1	0	0	1	?	1	1	1	1	?	1	0	1	1	1	0	1	1	0	1	1	0	
Masonbeckia	0	0	1	0	1	1	0	0	0	0	1	0	0	0	0	1	1	1	0	0	0	1	1	1	1	0	0	0	1	0	0	0	1	0	0	0	1	1	1	

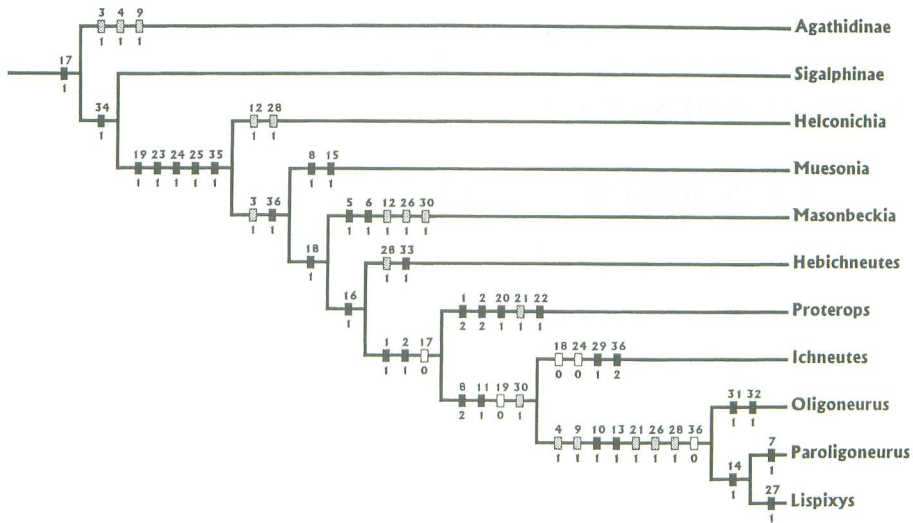


FIG. 1. Cladogram of proposed relationships of the genera of *Ichneutinae* (Generated using the software package CLADOS).

Running the corrected data set using the *ie** option of Hennig 86 results in one tree instead of the two reported in the publication. The topology of this tree is presented in Fig. 1, and it has the following statistics: length 55, consistency index 72, and retention index 81. Character state distributions were optimized favouring reversals when there was an equivocal choice between a convergence and a reversal. This is not meant to support this optimization procedure but rather to warn the reader that there are other equally parsimonious character state distributions for some characters. It is identical to the tree of Fig. 3 in the original revision except that *Masonbeckia* and *Hebichneutes* have switched positions on the tree.

Reference

- SHARKEY, M. J. and WHARTON, R. A., 1994, A revision of the world Ichneutinae (Hymenoptera: Braconidae), *Journal of Natural History*, **28**, 873–912.